

FORESIGHT COURT

8 UNITS
OF UNIQUELY DESIGNED
(4) BEDROOM TERRACE BUILDING

NOW SELLING ;
0814 406 6198



FORESIGHT IS THE ACT OF LOOKING FORWARD;

A VIEW OF
THE FUTURE.





Foresight Court is specially conceived, designed and developed with your future property investment or accommodation plan in mind.



Whether you are an investor, home owner or first time buyer, foresight court presents a unique investment opportunity for you, in view of its strategic location, proximity to the city center, and capital appreciation expected upon completion, amongst others.

8

UNITS OF 4 BEDROOM TERRACE

A private residential development comprising of 8 units of (4) bedroom terrace building on 2 suspended floors.





ABOUT FORESIGHT COURT

Foresight court is a private residential development comprising of 8 units of (4) bedroom terrace building on a 2 suspended floor, covering a gross floor area of 284m². Each unit has (2) spacious living room, large kitchen, adjoining balconies and (1) maid room/BQ.

Each units is built to the highest international standard with the best in-class or state of the art building elements strong enough to withstand the demand of its present and future occupants. The entire structure lies on a total land mass of about 5800m² fenced round with sandcrete hollow blocks, gate house, generator house, hard and soft landscaping, drainages, water borehole with overhead and ground water tanks and external lighting.



LIFESTYLE

With well positioned french windows for good ventilation sophisticated wooden interior doors, security exterior doors en suite, 21st Century Bathrooms long kitchen Areas, Recreational Terrace areas ample Parking Spaces for all,

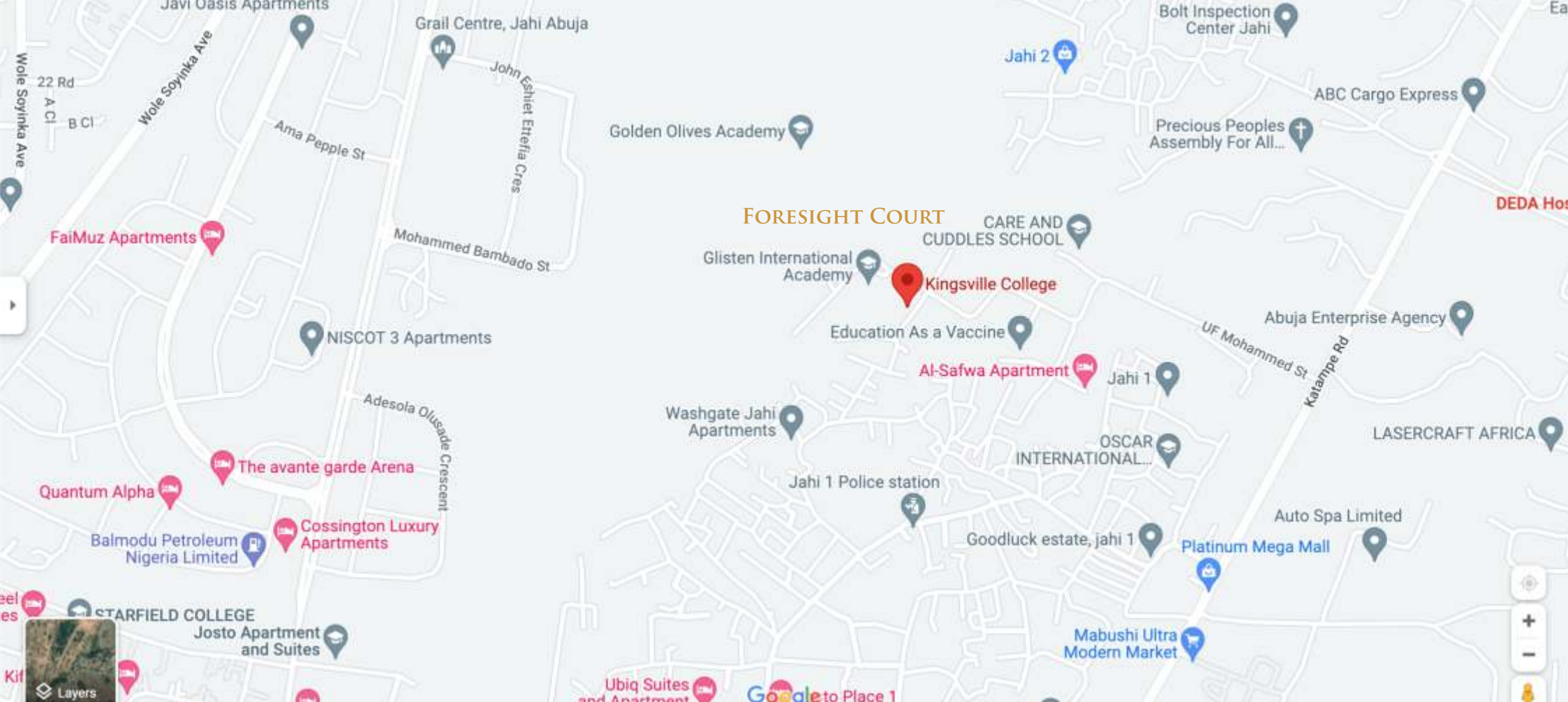
Foresight Court is designed for a Lifestyle of Modern Urban Living in a serene Residential neighbourhood.



“

STRATEGICALLY PLACED
IN THE
TRANQUIL ENVIRONMENT
OF
JAH I DISTRICT

”



LOCATION/PROXIMITY

Strategically placed in the Tranquil environment of Jahi District, A location described by wise investors as the hidden Treasure of Abuja,

Foresight Court is tucked between 2 major Highways - Katampe/Kubwa Express way and Ahmadu Bello way, less than 10 minutes drive to Next Cash and Carry Supermarket, Kado estate, Gwarinpa Estate, Life Camp & Wuse 2.

ESTATE SERVICES



Security Guards



24 Hours
Electricity



Intruder
Alarms Systems



24 Hour
Water Services



Horticultural & General
Cleaning Services



CCTV



Armed
Police Officers



Video Intercom



Access Control



RECREATION



FACILITIES MANAGEMENT

Foresight court will be managed by a team of highly professional personnel with many years of experience in facilities management.

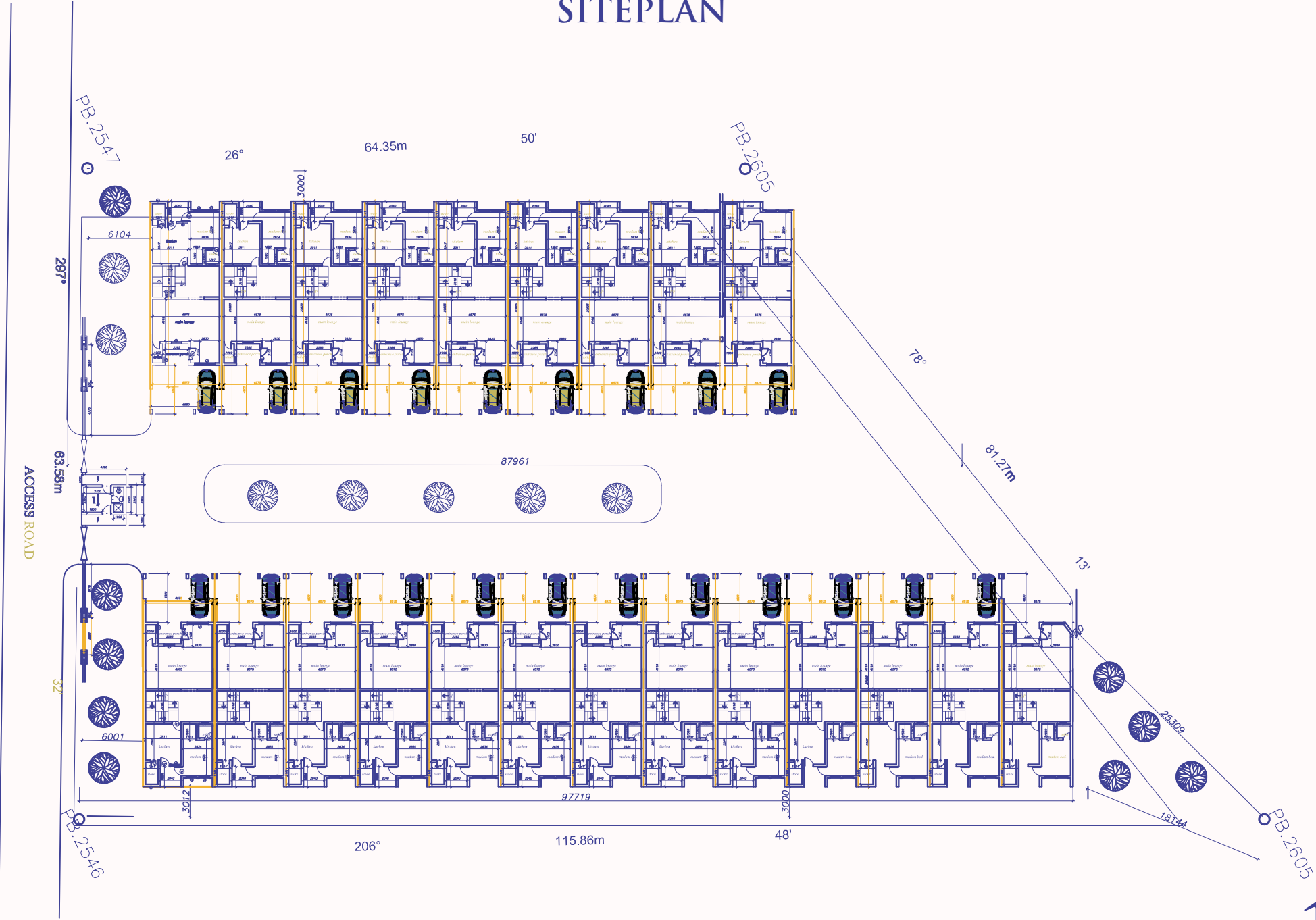
SPACING

“

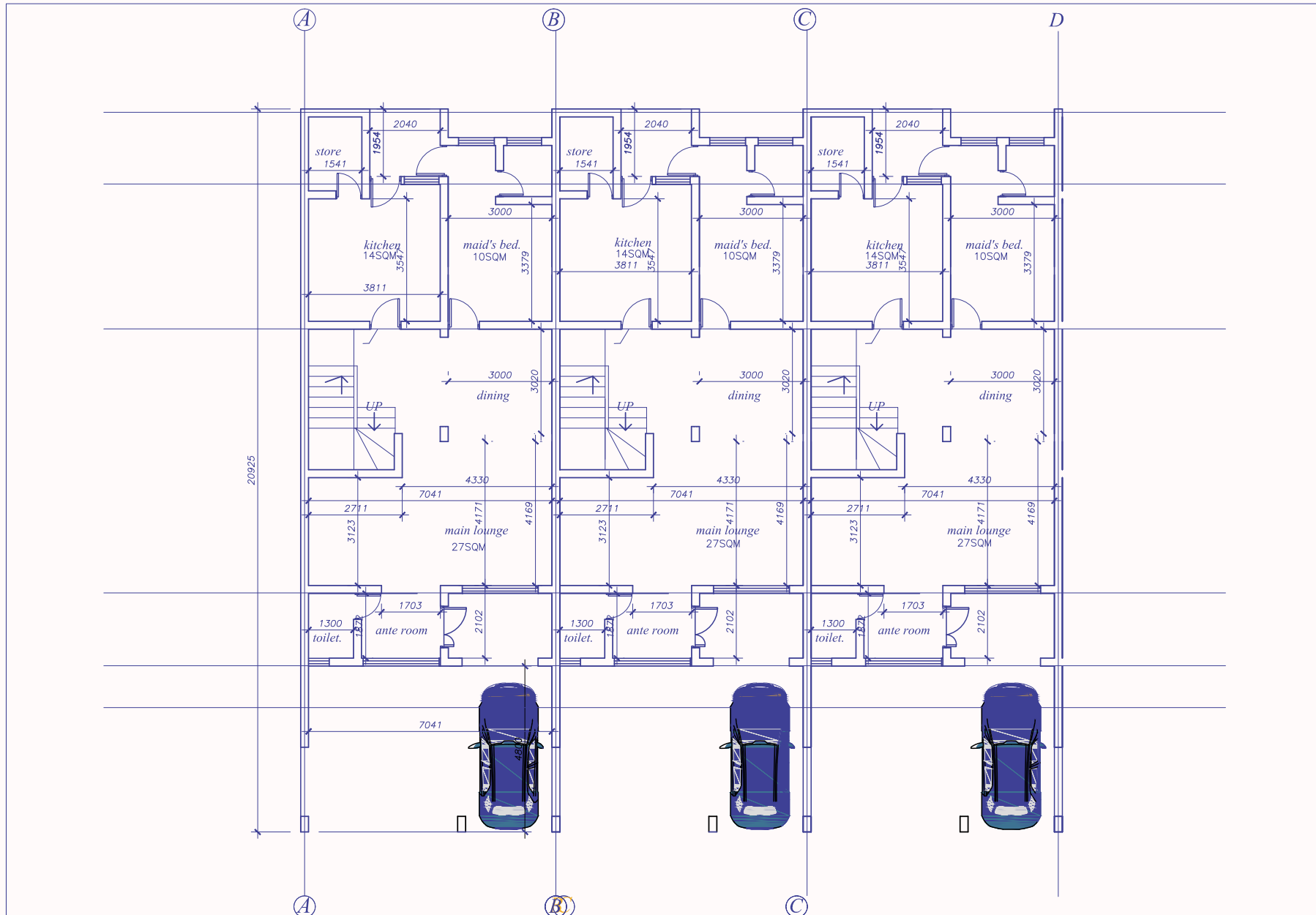
ALL
OUR HOUSES IN COMFORT HOMES
ARE LUXURIOUSLY SPACED
TO REFLECT GOOD FUNCTIONALITY
AND
MODERN RESIDENTIAL LIVING.

”

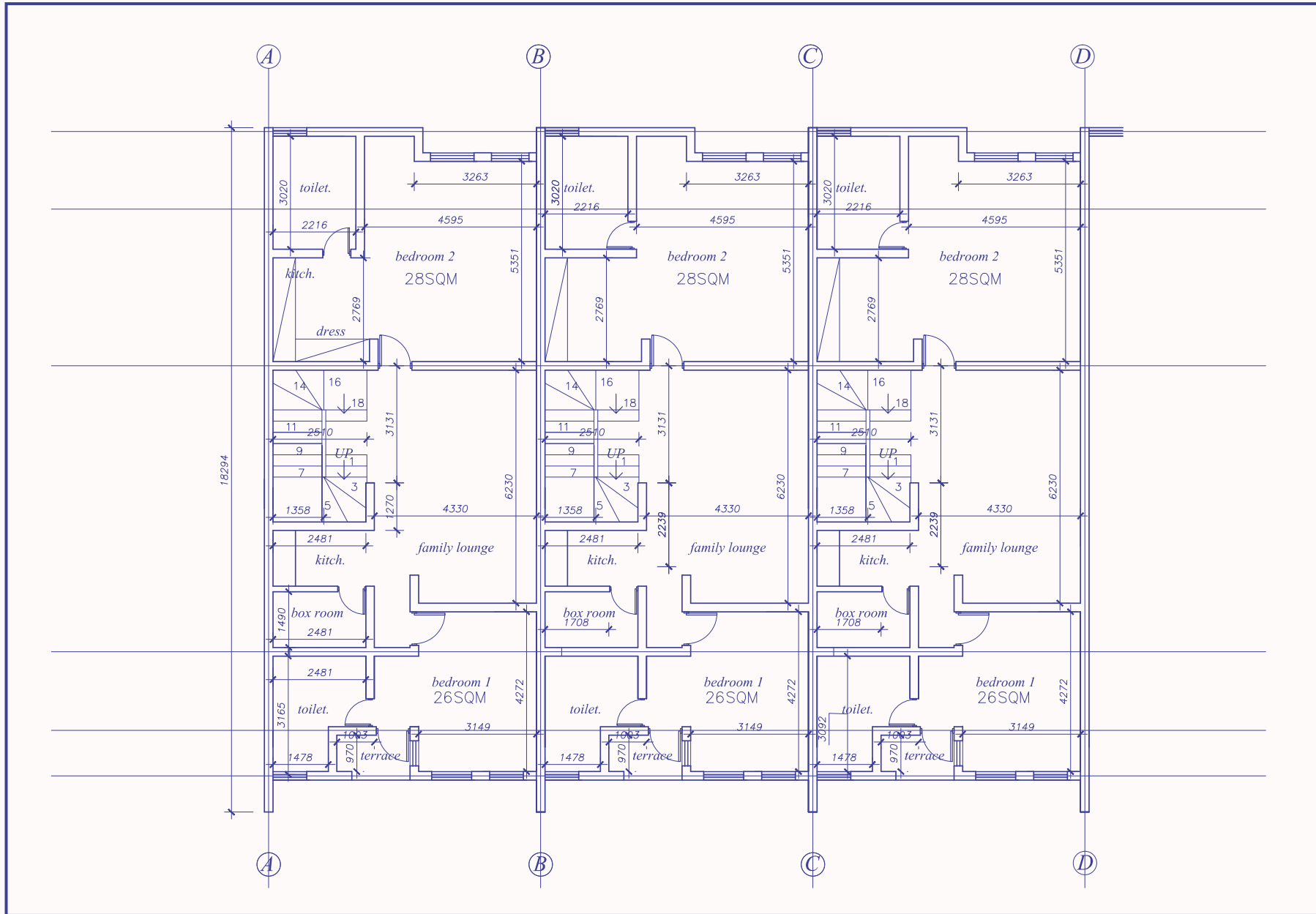
SITEPLAN



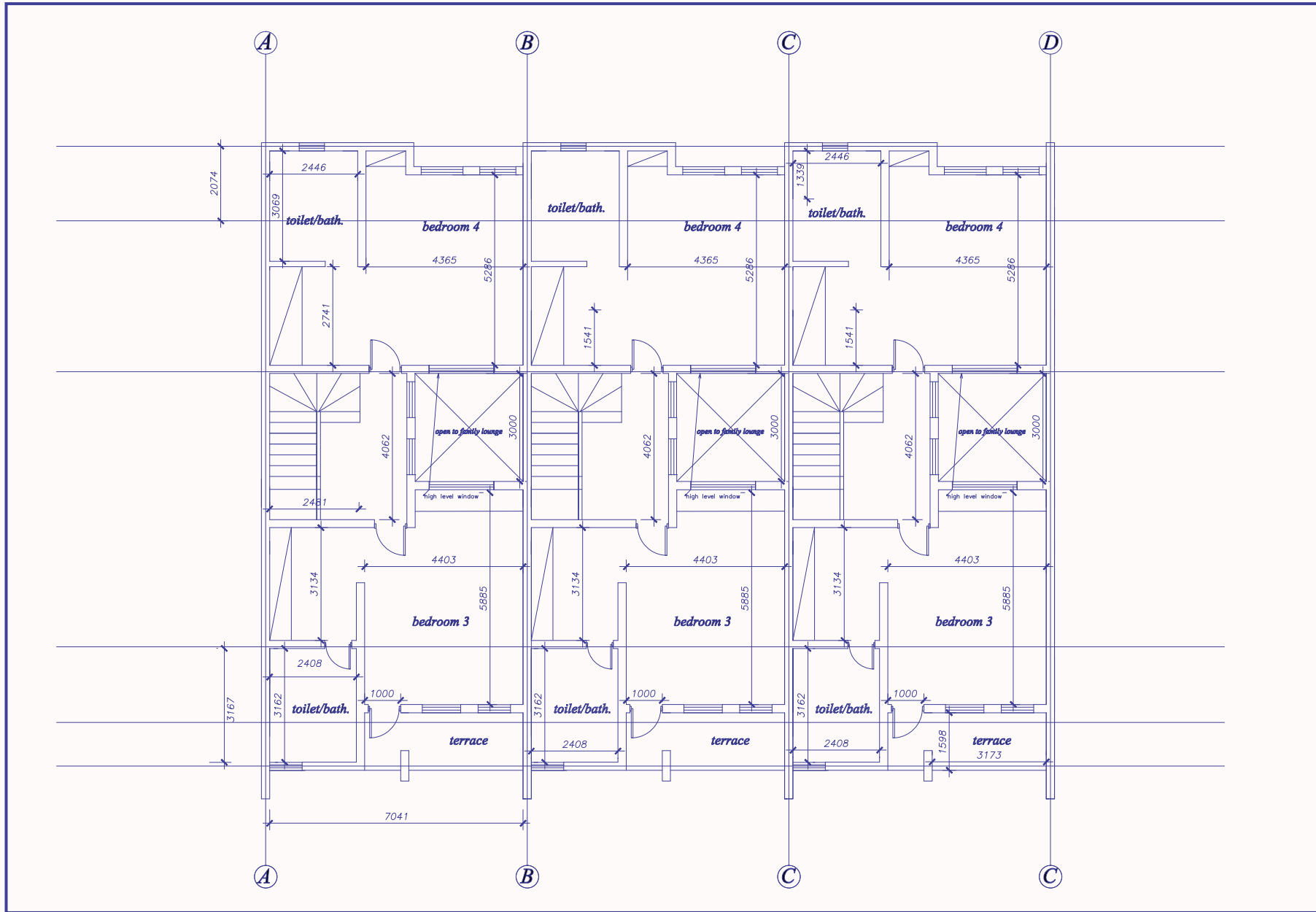
GROUND FLOOR PLANS



FIRST FLOOR PLANS



SECOND FLOOR PLANS



INFRASTRUCTURE



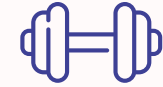
Underground
electricity system



Income & distribution
Transformers



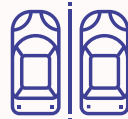
Water provision &
distribution facilities



Gym facilities



Green Areas to
live closer to nature



Parking Areas



Green Areas



Communal
Generators



Maintenance Office



Security Post



Street Light



Centre Sewage
system

INFRASTRUCTURE



Underground
Drainages



Pave walkways



Perimeter fence



Main Gate



Intercom & cctv



Intruder Alarm



Waste Collection
& Disposal



General Maintenance
of Common Areas
& Facilities.



INVESTMENT

“ EXCEPTIONAL PROMOTIONAL PRICE,
HIGH POTENTIAL FOR INCREMENTAL VALUE
UPON COMPLETION, GOOD RENTAL INCOME
AND EXCELLENT LOCATION ”

CONTACT

CITY OFFICE

A12B Bensima Complex; Red Sea Close,
By National Boundary Commission
Opp, Maitama Hospital, Maitama
Abuja.

SITE OFFICE

Plot 1700,
Near Kings Ville/Glisten Colleges,
Jahi

info@comforthomes.ng

www.comforthomes.ng

**0 8 1 4 4 0 6 6 1 9 8 ; 0 8 0 3 8 6 9 8 7 4 4 ;
08031986354; 07030703070; 08032307855**