



THE  
**GRAND MEADOW  
APARTMENTS**

COMFORTABLE, AFFORDABLE, BUILT TO LAST.

**NOW SELLING, CALL**

**08032307855, 08039716629**

**08063290678, 09099994949**

DEVELOPED BY



**COMFORT HOMES®**

*Peace of mind delivered!*

(COMFORT HOMES IS A REGISTERED TRADEMARK AND PROPRIETARY OF BOLD EAGLE (PVT) LIMITED.)

WWW.COMFORTHOMES.NG

# THE GRAND MEADOW APARTMENTS

A VISIONARY VENTURE.

01

ABOUT

03

LOCATION

05

ACCESSIBILITY

07

NEIGHBOURHOOD

09

AMENITIES

11-20

PROPERTY  
PLANS

21

DESIGN QUALITY/  
COMPLETION PERIOD

22

PRICING/  
PAYMENT PLAN

23

MORTGAGE/  
PARTNERS

A COLLECTION OF  
12 UNITS EXCLUSIVE  
LUXURY 3 BEDROOM  
BLOCK OF FLATS  
AT JAHI DISTRICT  
F.C.T ABUJA.

01



## ABOUT GRAND MEADOW APARTMENTS

GRAND MEADOW APARTMENTS IS THE NEWEST DEVELOPMENT BY COMFORT HOMES, SITUATED IN THE HEART OF THE EXCLUSIVE NEIGHBORHOOD OF JAHI DISTRICT ABUJA.

A DELIGHTFUL COMBINATION OF 12 UNITS EXCEPTIONAL 3 BEDROOM LUXURY APARTMENT HOMES DESIGNED WITH A HINT OF MODERN STYLING. ALL ROOMS ENSUITE, EACH HAVING A GENEROUS LAYOUT WITH OPULENCE, GRANDEUR AND AN ENCHANTING CONTEMPARY DESIGN.

ITS PROXIMITY TO UPSCALE SHOPPING MALLS , FINE RESTAURANTS AND SOCIAL AMENITIES EMPHASIZE A REGAL LIFESTYLE.

GRAND MEADOW APARTMENT IS COMFORTABLE, AFFORDABLE, ENDURING AND SUITABLE FOR EVERY FAMILY'S NEEDS.



“ ONLY 5 MINUTES  
DRIVE FROM THE  
HEART OF WUSE II,  
TO JAHI DISTRICT  
F.C.T ABUJA”.

03



## LOCATION

LOCATED ONLY 5KM FROM THE HEART OF WUSE II CITY CENTER , GRAND MEADOW APARTMENTS IS EASILY ACCESSED FROM AHMADU BELLO WAY OR GWARINPA EXPRESSWAY OFF NAF CONFERENCE CENTRE @ THE JAH I DISTRICT ABUJA,

THE EXCELLENT ROAD NETWORK MAKES THIS THE IDEAL LOCATION FOR THOSE WISHING TO ESCAPE THE CITY LIFE WITH A SHORT COMMUTE TO WORK EACH DAY.

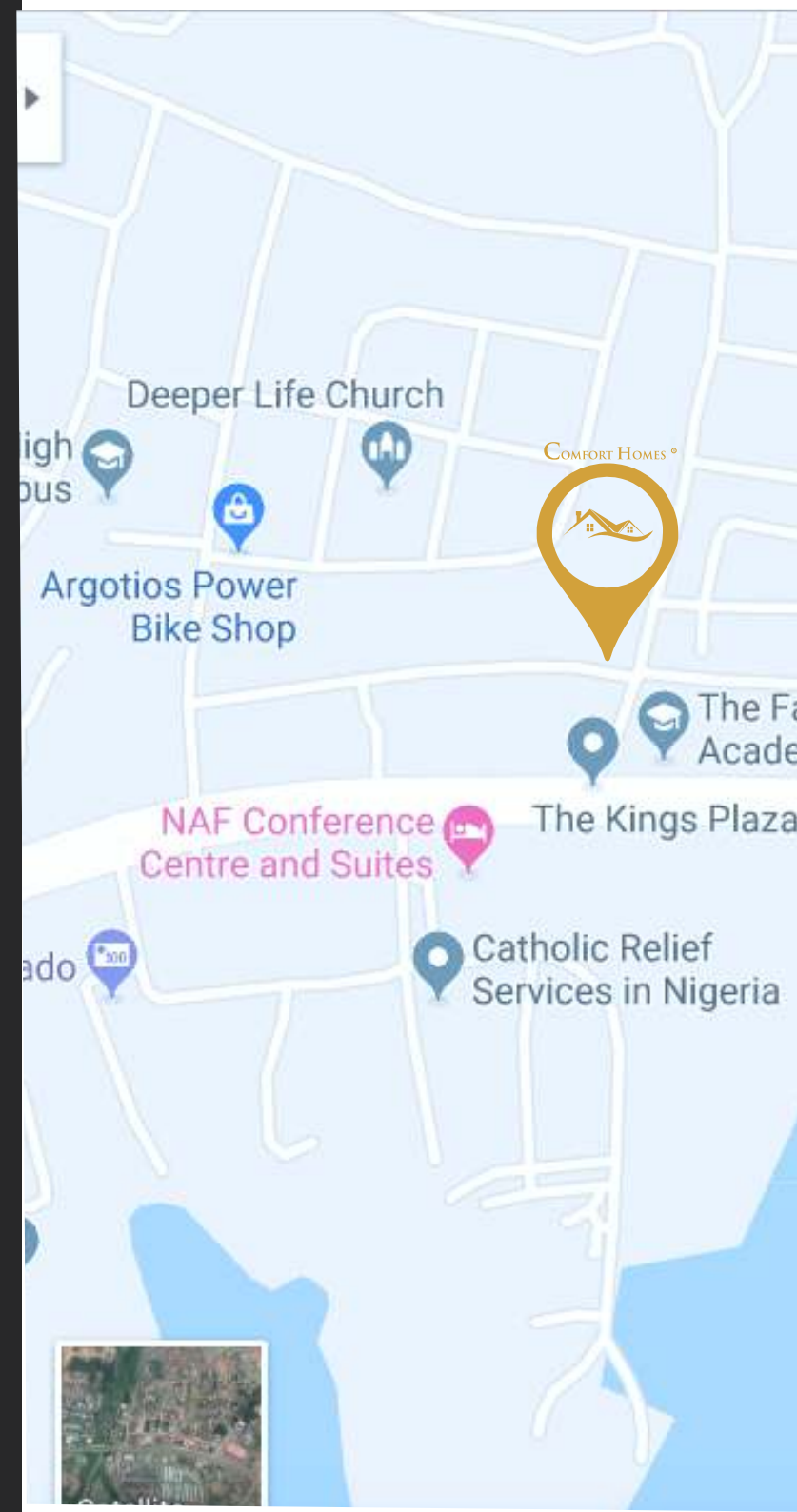


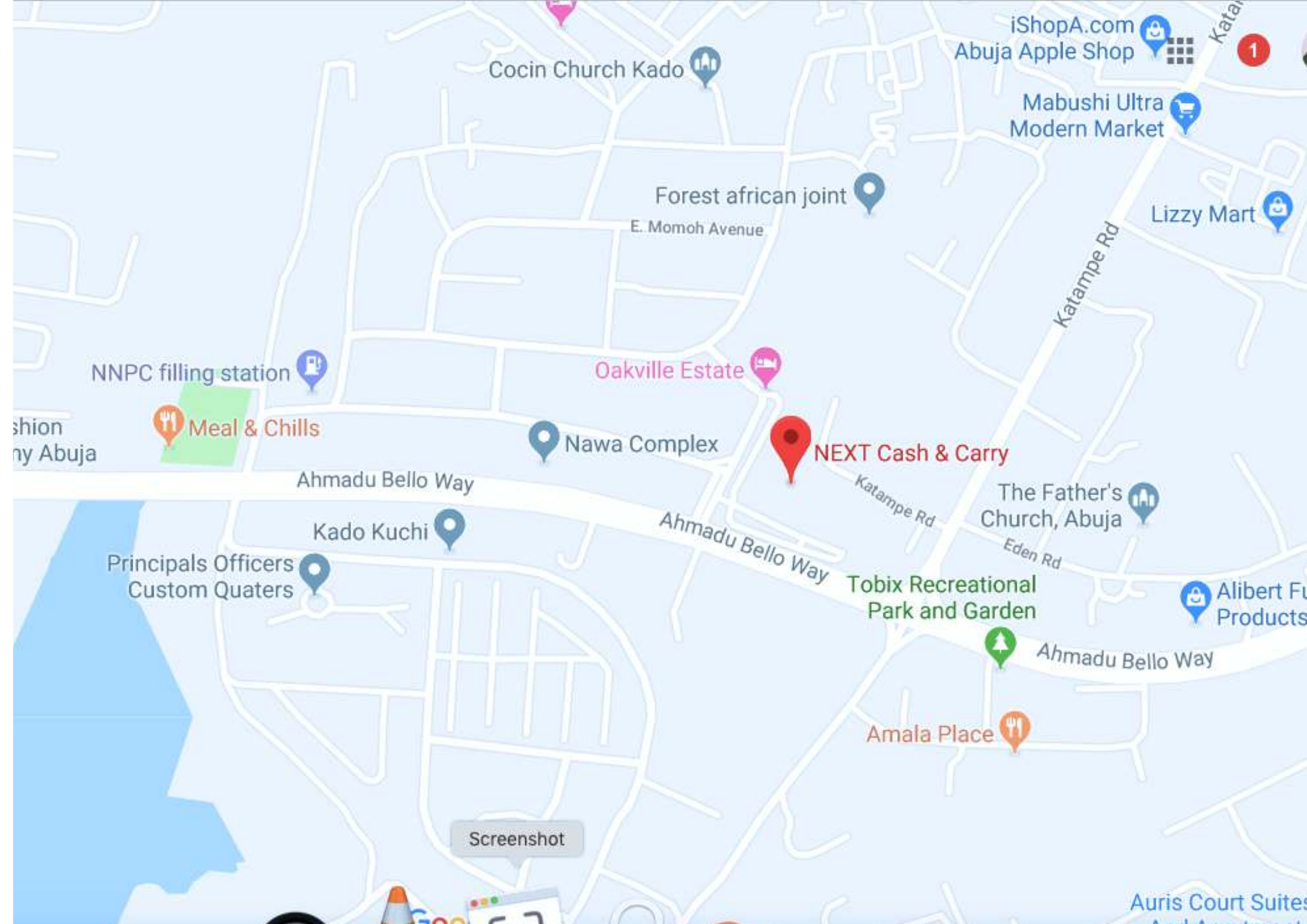
# “LIKE A TRAIN GLIDING THROUGH THE CITY”

LIKE A BLACK DOT ON A WHITE PAPER,  
GRAND MEADOW APARTMENTS IS EASILY  
ACCESSIBLE.

DUE TO IT BEING AESTHETICALLY POSITIONED IN  
AN ABUNDANCE OF ROAD NETWORKS AND  
LOCATED OFF A MAJOR EXPRESS WAY JUST 20  
MINUTES FROM THE CITY CENTRE.

05





iShopA.com  
Abuja Apple Shop

Cocin Church Kado

Mabushi Ultra  
Modern Market

Forest african joint  
E. Momoh Avenue

Lizzy Mart

NNPC filling station

Oakville Estate

Meal & Chills

Nawa Complex

NEXT Cash & Carry

Ahmadu Bello Way

The Father's  
Church, Abuja

Kado Kuchi

Ahmadu Bello Way

Tobix Recreational  
Park and Garden

Principals Officers  
Custom Quarters

Ahmadu Bello Way

Alibert Fu  
Products

Amala Place

Screenshot

Auris Court Suites



# “RELAX IN A SECURE AND VIBRANT NEIGHBOURHOOD”

GRAND MEADOW APARTMENTS SITUATED AMIDST THE PEACEFUL AND GREEN NEIGHBORHOOD OF JAHİ, PROVIDES QUICK ACCESS TO GROCERY STORES, SUPERMARKETS, PHARMACIES, FUEL STATIONS AND MANY KEY SOCIAL POINTS OF INTEREST.

- A MERE 10 MINS WALKING DISTANCE TO NEXT SUPERMARKET
- A 5 MINS BRISK WALK TO NAF CONFERENCE CENTRE
- 10 MINS DRIVE TO THE JABI MALL
- A 5 MINS DRIVE TO THE POPULAR BANEX/EMAB PLAZAS
- EASY ACCESS TO THE KUBWA & ABUJA AIRPORT EXPRESSWAYS
- ACCESS TO NNPC, TOTAL & EMADEB FUEL STATIONS AND LOTS MORE



NAF CONFERENCE CENTRE



NEXT CASH AND CARRY



JABI LAKE MALL



PROXIMITY TO SCHOOLS

“ENJOY  
AN ENHANCED  
LIFESTYLE”

09



# AMENITIES

NOTE THAT SOME AMENITIES ARE OPTIONAL AND ARE SUBJECT TO TERMS AND CONDITIONS



LUXURY FURNITURE



ELECTRONIC DOORS



TERRACE



STANDBY POWER SERVICES



SECURITY



BOREHOLE WATER



INTERCOM SERVICES



24HRS CCTV



WI - FI ACCESS



FACILITY MANAGEMENT

# PROPERTY PLANS



# PROPERTY PLANS



# PROGRESS & STATUS



90%  
COMPLETED

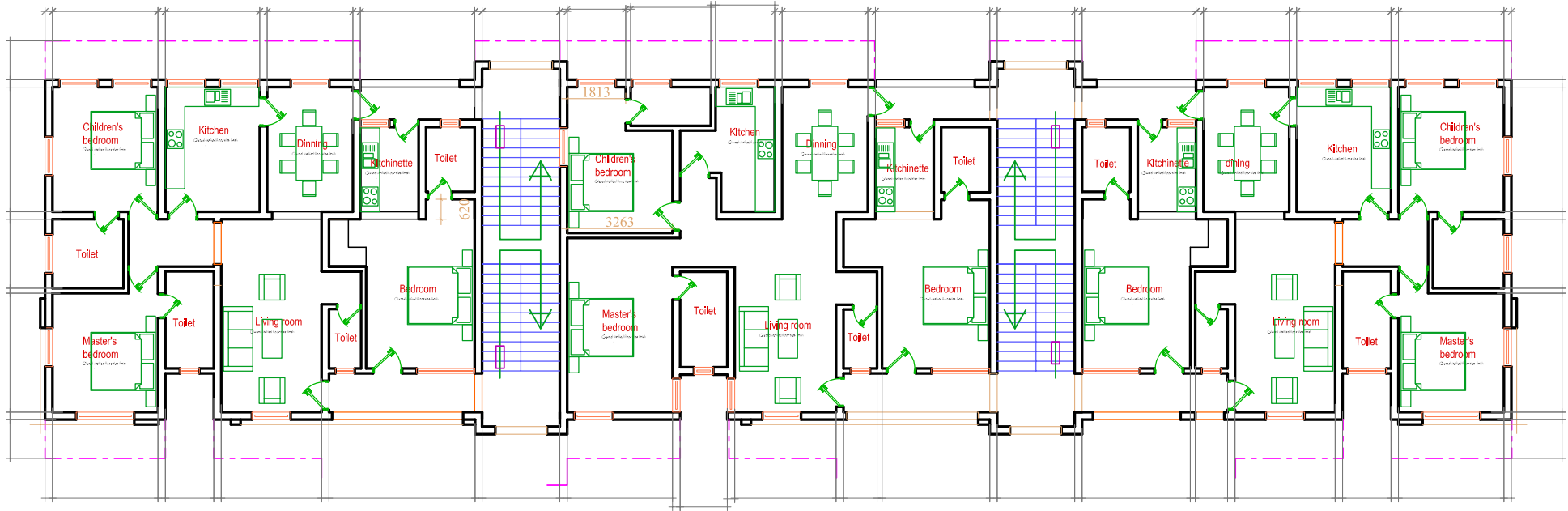


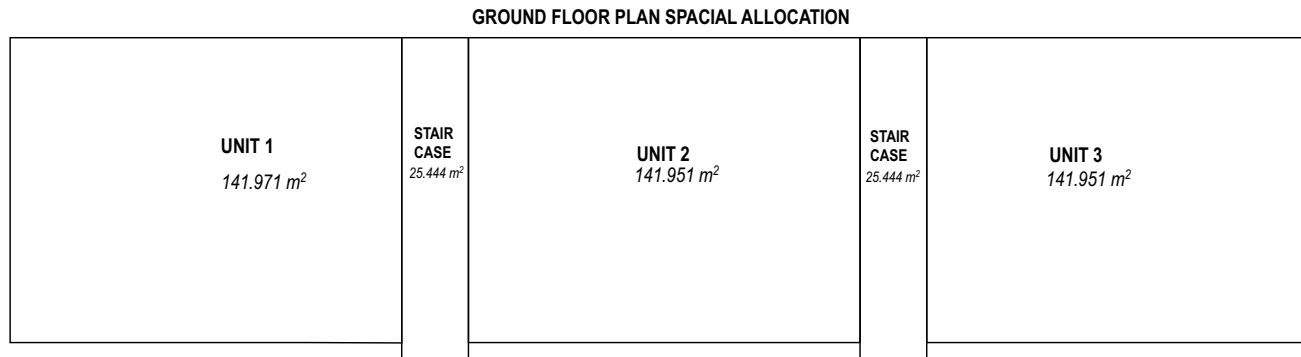
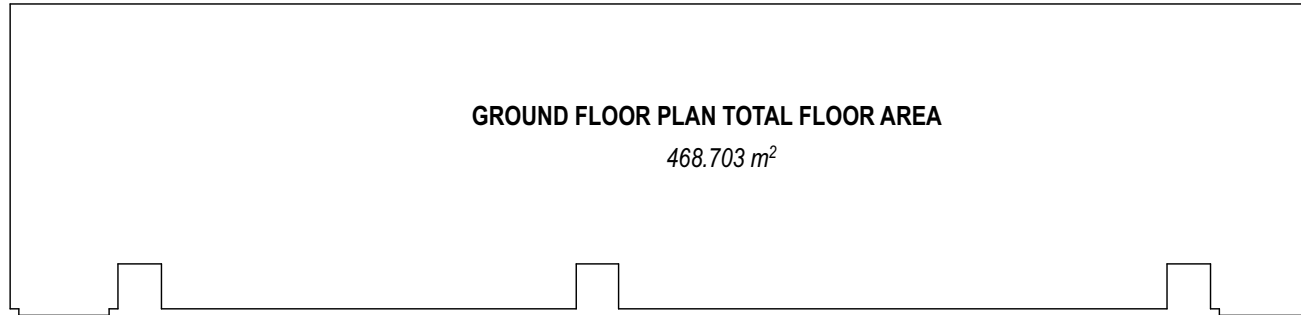
# PROGRESS & STATUS





# GROUND FLOOR PLAN

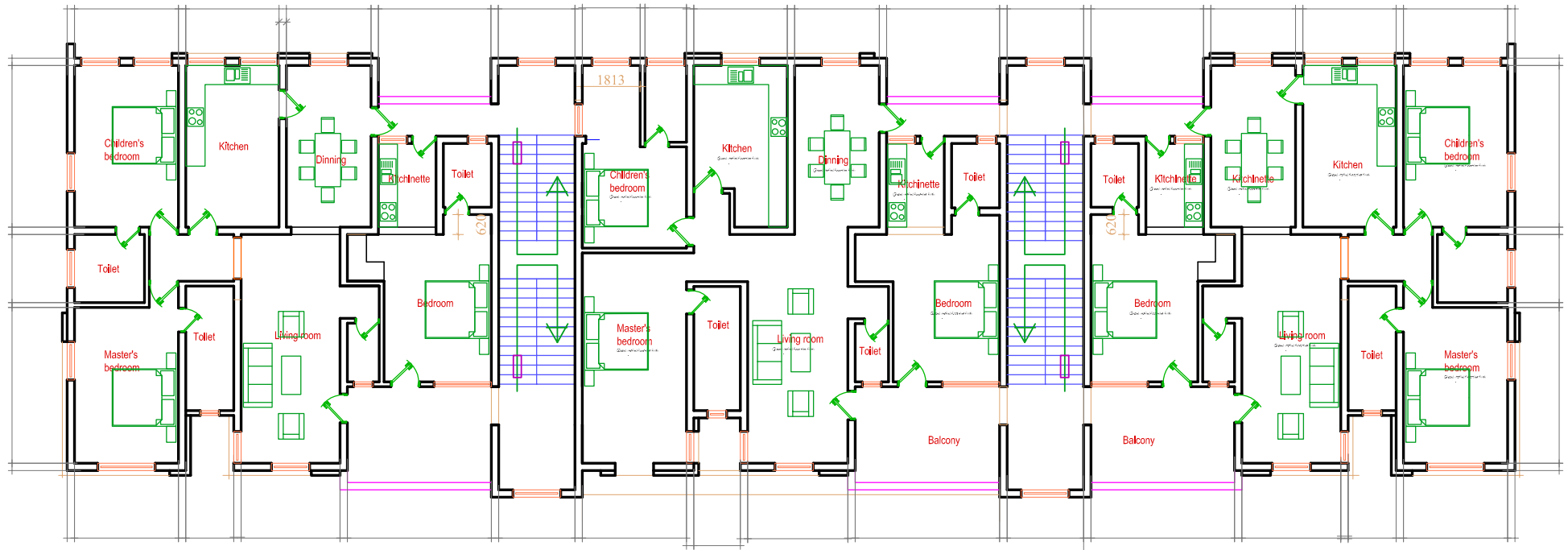


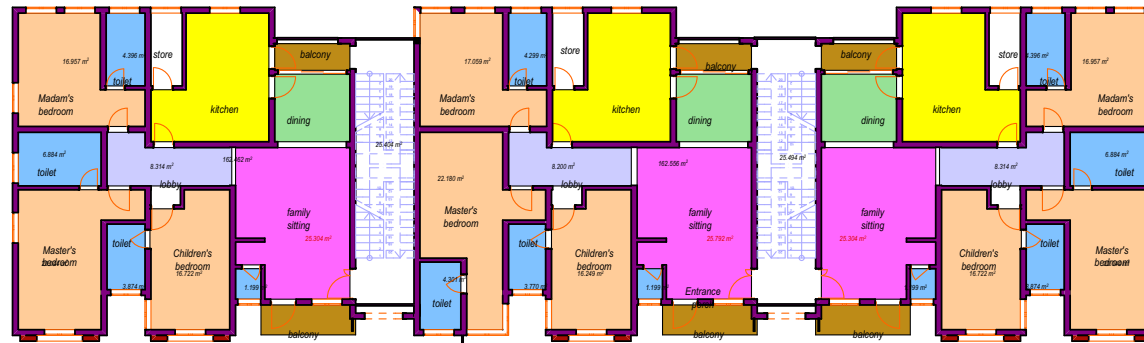
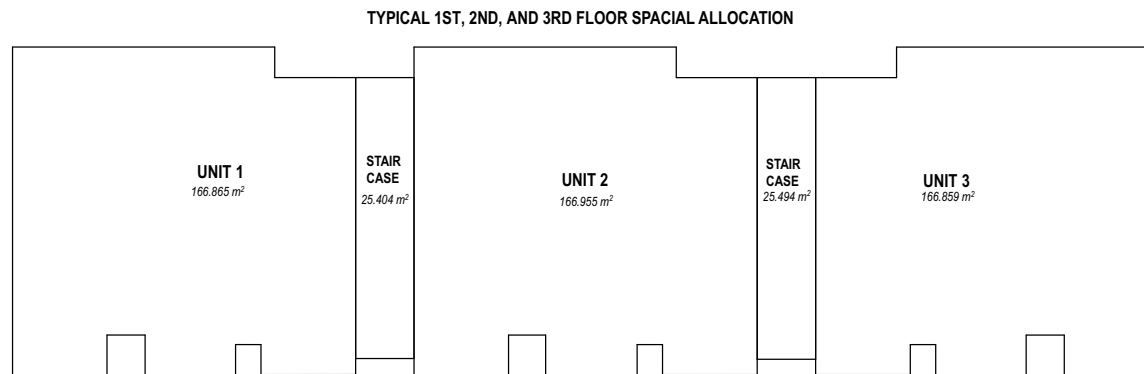
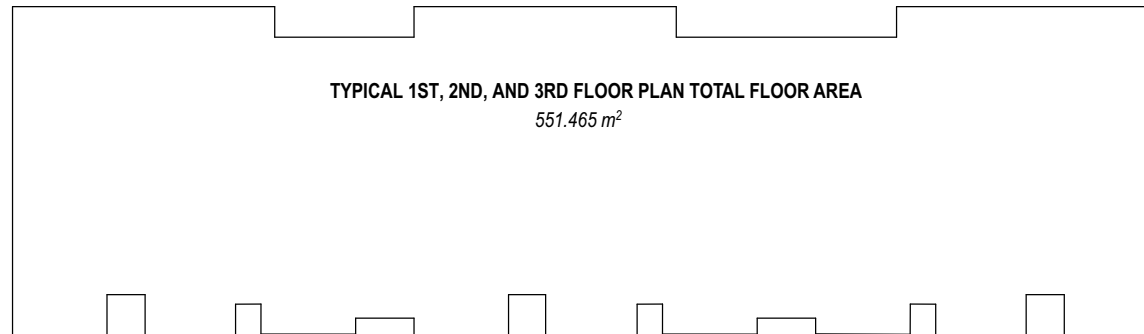


1.

**SPACIAL ALLOCATION FOR GROUND FLOOR**  
**SCALE: 1:200**

# 1ST - 3RD FLOOR PLAN





**TYPICAL 1ST, 2ND, AND 3RD FLOOR PLANS**

2.

**SPACIAL ALLOCATION FOR TYPICAL FLOORS**  
**SCALE: 1:200**

## AREA SPACIAL ALLOCATION

FLOOR	UNIT1	UNIT2	UNIT3	TOTAL FLOOR AREA
GROUND FLOOR	141.951M <sup>2</sup>	141.951M <sup>2</sup>	141.951M <sup>2</sup>	468.703M <sup>2</sup>
1ST FLOOR	166.865M <sup>2</sup>	166.865M <sup>2</sup>	166.865M <sup>2</sup>	551.465M <sup>2</sup>
2ND FLOOR	166.865M <sup>2</sup>	166.865M <sup>2</sup>	166.865M <sup>2</sup>	551.465M <sup>2</sup>
3RD FLOOR	166.865M <sup>2</sup>	166.865M <sup>2</sup>	166.865M <sup>2</sup>	551.465M <sup>2</sup>

## COMPLETION PERIOD

12 - 18 MONTHS AFTER PAYMENT CYCLE.

## MORTGAGE

AVAILABLE ON DEMAND

## PRICES AND PAYMENT PLAN

ATTACHED OVERLEAF

## NOW SELLING CONTACT US



MUYIDEEN  
08032307855

CHARITY  
08039716629

AUSTIN  
08063290678

MOHAMMED  
09099994949

AND OUR MARKETING PARTNERS  
NATIONWIDE.

21

## PAYMENT PLANS

FLOOR	UNIT 1	UNIT 2	UNIT 3
GROUND FLOOR	FLAT 1	FLAT 2	FLAT 3
	NGN34,413,750	NGN34,413,750	NGN34,413,750
1ST FLOOR	FLAT 4	FLAT 5	FLAT 6
	NGN36,309,000	NGN36,309,000	NGN36,309,000
2ND FLOOR	FLAT 7	FLAT 8	FLAT 9
	NGN34,563,375	NGN34,563,375	NGN34,563,375
3RD FLOOR	FLAT 10	FLAT 11	FLAT 12
	NGN32,917,500	NGN32,917,500	NGN32,917,500

**EARLY BIRD DISCOUNT AVAILABLE, SUBJECT TO TERMS AND CONDITIONS**



Affix  
Passport  
Photograph  
Here

Name of Subscriber (s) .....

Home Address/ Tel .....

Place of Work .....

Email ..... Date of Birth .....

Apartment Type .....

Next of Kin .....

Contact Address/Tel .....

Email .....

..... Subscriber(s) Signature/Date

**AGREED PAYMENT PLAN**

**AGREED PAYMENT PLAN**

1) Initial Deposit: N ..... (10% ..... ) Date .....

2) Subsequent additional and final payments are subject to agreed terms at the beginning of the transaction.

3) Discount is available for substantial initial deposit to be determined at the beginning of the transaction.

**Please Note:** That the default in any of the payment stages is a maximum of 14 days notice from the date of the default will be given after which, a process of discontinuance and review of the transaction will take effect.

Prices are subject to change without notice, unless full payment is received within the agreed period.

All payments shall be payable to **BOLD EAGLE (PVT) LIMITED** by electronic transfer or bank draft at the company's designated banks. We shall not be liable for any payments made to a 3rd party or non company account, unless payment is duly received by the company and official receipt issued.

..... Subscriber(s)/Date

..... Head, Sales & Marketing



# 2020 CALENDER PLANNER

## 01 January 2020

Monday	Tuesday	Wednesday	Thursday	Friday	Saturday	Sunday
30	31	1	2	3	4	5
6	7	8	9	10	11	12
13	14	15	16	17	18	19
20	21	22	23	24	25	26
27	28	29	30	31	1	2
3	4	5	6	7	8	9

---



---



---



---

## 02 February 2020

Monday	Tuesday	Wednesday	Thursday	Friday	Saturday	Sunday
27	28	29	30	31	1	2
3	4	5	6	7	8	9
10	11	12	13	14	15	16
17	18	19	20	21	22	23
24	25	26	27	28	29	1
2	3	4	5	6	7	8

---



---



---



---

## 03 March 2020

Monday	Tuesday	Wednesday	Thursday	Friday	Saturday	Sunday
24	25	26	27	28	29	1
2	3	4	5	6	7	8
9	10	11	12	13	14	15
16	17	18	19	20	21	22
23	24	25	26	27	28	29
30	31	1	2	3	4	5

---



---



---



---

## 04 April 2020

Monday	Tuesday	Wednesday	Thursday	Friday	Saturday	Sunday
30	31	1	2	3	4	5
6	7	8	9	10	11	12
13	14	15	16	17	18	19
20	21	22	23	24	25	26
27	28	29	30	1	2	3
4	5	6	7	8	9	10

---



---



---



---

## 05 May 2020

Monday	Tuesday	Wednesday	Thursday	Friday	Saturday	Sunday
27	28	29	30	1	2	3
4	5	6	7	8	9	10
11	12	13	14	15	16	17
18	19	20	21	22	23	24
25	26	27	28	29	30	31
1	2	3	4	5	6	7

---



---



---



---

## 06 June 2020

Monday	Tuesday	Wednesday	Thursday	Friday	Saturday	Sunday
1	2	3	4	5	6	7
8	9	10	11	12	13	14
15	16	17	18	19	20	21
22	23	24	25	26	27	28
29	30	1	2	3	4	5
6	7	8	9	10	11	12

---



---



---



---

# 2020 CALENDER PLANNER

**07 July 2020**

Monday	Tuesday	Wednesday	Thursday	Friday	Saturday	Sunday
29	30	1	2	3	4	5
6	7	8	9	10	11	12
13	14	15	16	17	18	19
20	21	22	23	24	25	26
27	28	29	30	31	1	2
3	4	5	6	7	8	9

---



---



---



---

**08 August 2020**

Monday	Tuesday	Wednesday	Thursday	Friday	Saturday	Sunday
27	28	29	30	31	1	2
3	4	5	6	7	8	9
10	11	12	13	14	15	16
17	18	19	20	21	22	23
24	25	26	27	28	29	30
31	1	2	3	4	5	6

---



---



---



---

**09 September 2020**

Monday	Tuesday	Wednesday	Thursday	Friday	Saturday	Sunday
31	1	2	3	4	5	6
7	8	9	10	11	12	13
14	15	16	17	18	19	20
21	22	23	24	25	26	27
28	29	30	1	2	3	4
5	6	7	8	9	10	11

---



---



---



---

**10 October 2020**

Monday	Tuesday	Wednesday	Thursday	Friday	Saturday	Sunday
28	29	30	1	2	3	4
5	6	7	8	9	10	11
12	13	14	15	16	17	18
19	20	21	22	23	24	25
26	27	28	29	30	31	1
2	3	4	5	6	7	8

---



---



---



---

**11 November 2020**

Monday	Tuesday	Wednesday	Thursday	Friday	Saturday	Sunday
26	27	28	29	30	31	1
2	3	4	5	6	7	8
9	10	11	12	13	14	15
16	17	18	19	20	21	22
23	24	25	26	27	28	29
30	1	2	3	4	5	6

---



---



---



---

**12 December 2020**

Monday	Tuesday	Wednesday	Thursday	Friday	Saturday	Sunday
30	1	2	3	4	5	6
7	8	9	10	11	12	13
14	15	16	17	18	19	20
21	22	23	24	25	26	27
28	29	30	31	1	2	3
4	5	6	7	8	9	10

---



---



---



---

THE  
GRAND MEADOW  
APARTMENTS

COMFORTABLE, AFFORDABLE, BUILT TO LAST.

COMFORT HOMES IS A REGISTERED TRADEMARK AND PROPRIETARY OF  
BOLD EAGLE (PVT) LIMITED

DEVELOPED BY



**BOLD EAGLE (PVT) LIMITED**

SUITE A12 BENSIMA HOUSE RED SEA CLOSE ,  
BEHIND NATIONAL BOUNDARY COMMISSION  
OPPOSITE MAITAMA HOSPITAL,  
MAITAMA ABUJA - NIGERIA

08032307855, 09099994949

08039716629, 08063290678

[INFO@COMFORTHOMES.COM.NG](mailto:INFO@COMFORTHOMES.COM.NG)

[WWW.COMFORTHOMES.COM.NG](http://WWW.COMFORTHOMES.COM.NG)